

FA33217-XXX

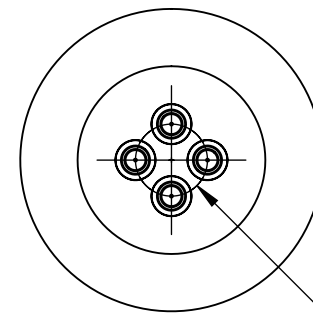
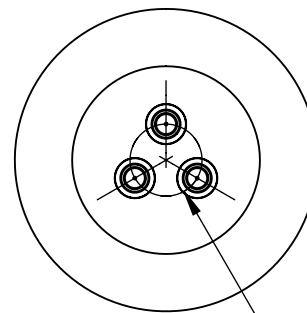
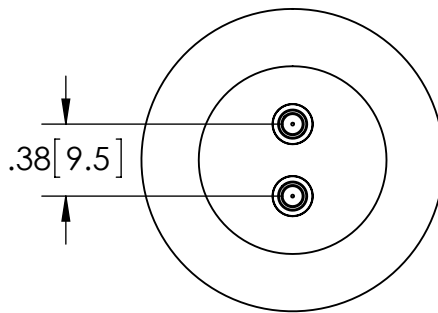
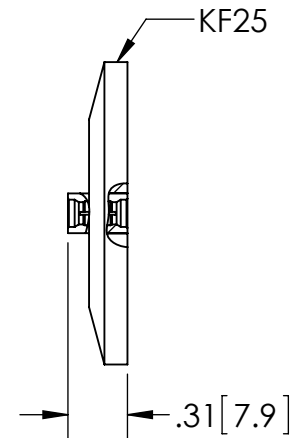
PART NUMBER

NUMBER OF SMPs IN FLANGE
eg. 1 THRU 4

AIR SIDE TERMINATION
eg. F=FULL
S= SMOOTH
L= LIMITED

VACUUM SIDE TERMINATION
eg. F=FULL
S= SMOOTH
L= LIMITED

Ø 1.58 [40.0]



Ø .38 [9.5]

PERFORMANCE SPECIFICATIONS	
VOLTAGE (DWV):	500V RMS
INSULATION RESISTANCE:	> 5000 MΩ
TEMPERATURE WITHOUT PLUG:	-25°C TO 205°C
TEMPERATURE WITH PLUG:	-25°C TO 165°C

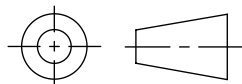
LEAK RATE <1 X 10E-10 ATM-CC/SEC (He)

WWW.SOLIDSEALING.COM

PROPRIETARY AND CONFIDENTIAL

THE INFORMATION CONTAINED IN THIS DRAWING IS THE SOLE PROPERTY OF SOLID SEALING TECHNOLOGY. ANY REPRODUCTION IN PART OR AS A WHOLE WITHOUT THE WRITTEN PERMISSION OF SOLID SEALING TECHNOLOGY IS PROHIBITED.

THIRD ANGLE PROJECTION



TITLE:

50 OHM SMP IN KF25 FLANGE



SOLID SEALING TECHNOLOGY, INC.

REV.	APP'D	DATE	SCALE 1:1	DIMENSIONS IN INCHES [mm]	DRAWN	MH	12/18/2015
A1	JF	01/26/2016	COSM0004-11		ENG APPR.	JF	01/26/2016

PART NO. FA33217 REV. A

SALES DWG NO. FA33217SL REV. A1

DIMENSIONS ARE FOR REFERENCE ONLY. UNLESS NOTED, NO TOLERANCES ARE IMPLIED. CONSULT SST TO DISCUSS YOUR SPECIFIC REQUIREMENTS.