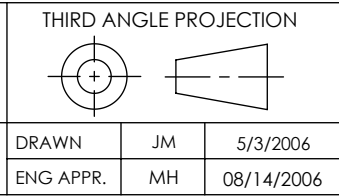


PART NO.	CONDUCTOR MATERIAL	CURRENT	AIR SIDE PLUG
FA12655	NICKEL	16 AMPS	NO
KT12655	NICKEL	16 AMPS	YES
FA12655-02	MOLYBDENUM	23 AMPS	NO
KT12655-02	MOLYBDENUM	23 AMPS	YES

RATINGS	
CONDUCTOR MATERIAL:	SEE TABLE AT LEFT
VOLTAGE:	700V DC
CURRENT:	SEE TABLE AT LEFT
PRESSURE:	475 PSIG @ 20°C
TEMPERATURE WITHOUT PLUG:	-269°C TO 450°C
TEMPERATURE WITH PLUG:	-55°C TO 125°C

PROPRIETARY AND CONFIDENTIAL
 THE INFORMATION CONTAINED IN THIS DRAWING IS THE SOLE PROPERTY OF SOLID SEALING TECHNOLOGY. ANY REPRODUCTION IN PART OR AS A WHOLE WITHOUT THE WRITTEN PERMISSION OF SOLID SEALING TECHNOLOGY IS PROHIBITED.

REV.	APP'D	DATE	SCALE 1:1	DIMENSIONS IN INCHES [mm]
A2	JS	11/26/2012	MPDP0020-0ST	



TITLE: FOUR PIN CONNECTOR

PART NO. (SEE TABLE) REV. A

WWW.SOLIDSEALING.COM

SOLID SEALING TECHNOLOGY, INC.

SALES DWG NO. FA12655SL REV. A2