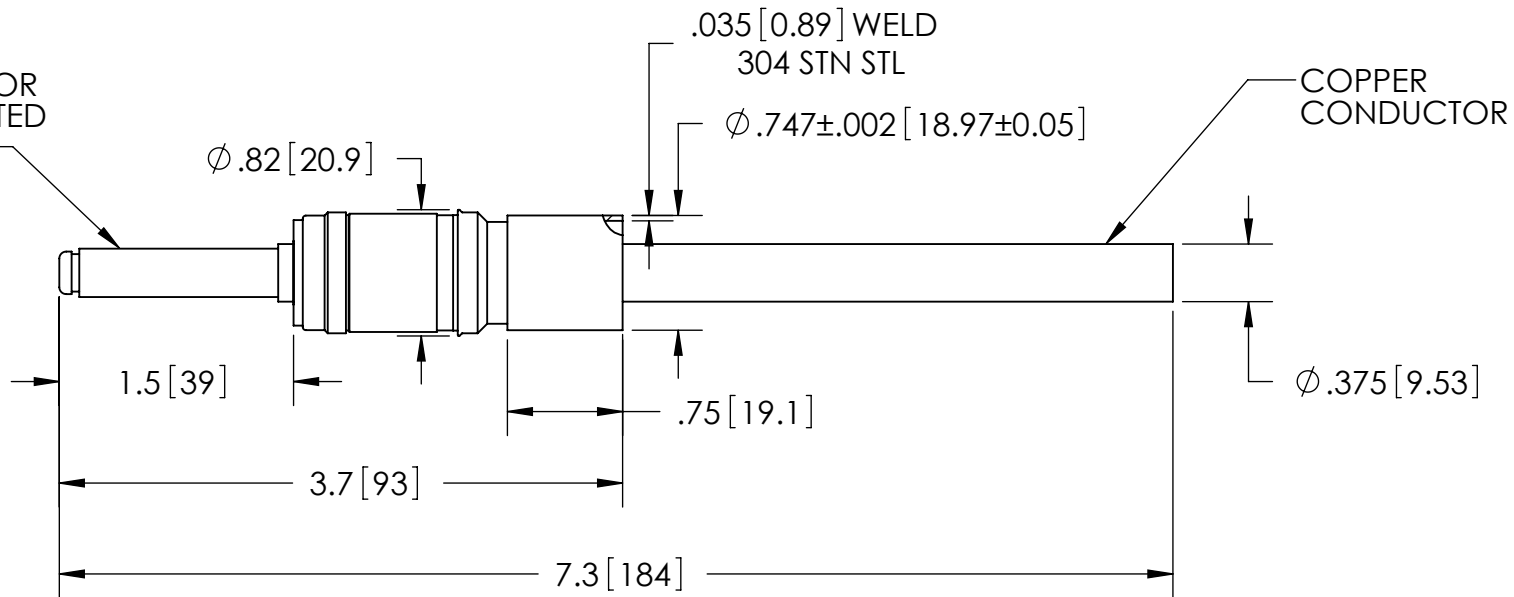
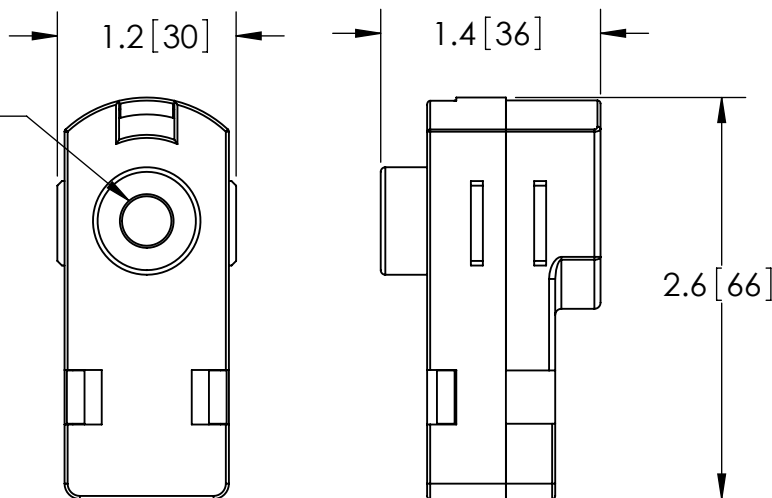


CONDUCTOR
SILVER PLATED
THIS END



SILVER
PLATED
PUSH ON
CONTACT



-AIR SIDE PLUG INCLUDED

ACCEPTS
1 AWG WIRE
FOR CRIMP

RATINGS	
VOLTAGE:	2.5 KV DC
CURRENT:	200 AMPS
PRESSURE:	500 PSIG @ 20°C
TEMPERATURE WITHOUT PLUG:	-269°C TO 450°C
TEMPERATURE WITH PLUG:	-55°C TO 125°C

PROPRIETARY AND CONFIDENTIAL

THE INFORMATION CONTAINED IN THIS DRAWING IS THE SOLE PROPERTY OF SOLID SEALING TECHNOLOGY. ANY REPRODUCTION IN PART OR AS A WHOLE WITHOUT THE WRITTEN PERMISSION OF SOLID SEALING TECHNOLOGY IS PROHIBITED.

THIRD ANGLE PROJECTION



TITLE:

ONE PIN CONNECTOR

WWW.SOLIDSEALING.COM



SOLID SEALING TECHNOLOGY, INC.

REV.	APP'D	DATE	SCALE 4:5	DIMENSIONS IN INCHES [mm]	DRAWN	JS	2/19/2009
B2	JS	11/26/2012	FTST0106-13		ENG APPR.	MH	07/01/2009

PART NO. KT20166 REV. B

SALES DWG NO. KT20166SL REV. B2

DIMENSIONS ARE FOR REFERENCE ONLY. UNLESS NOTED, NO TOLERANCES ARE IMPLIED. CONSULT SST TO DISCUSS YOUR SPECIFIC REQUIREMENTS.