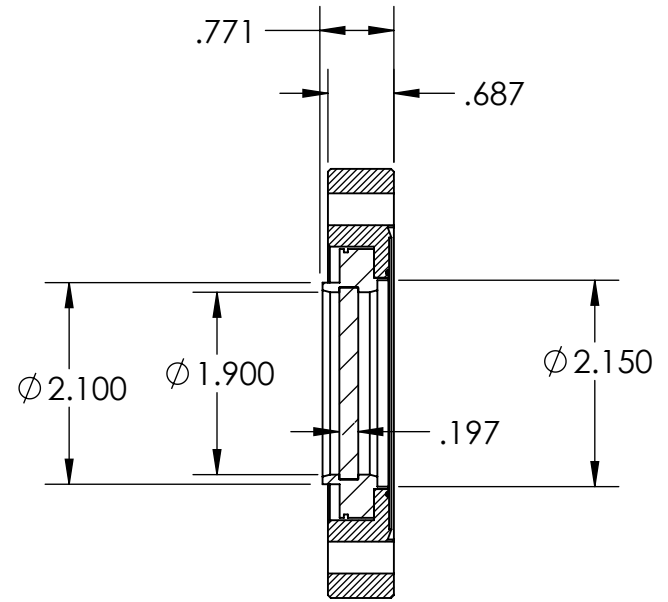
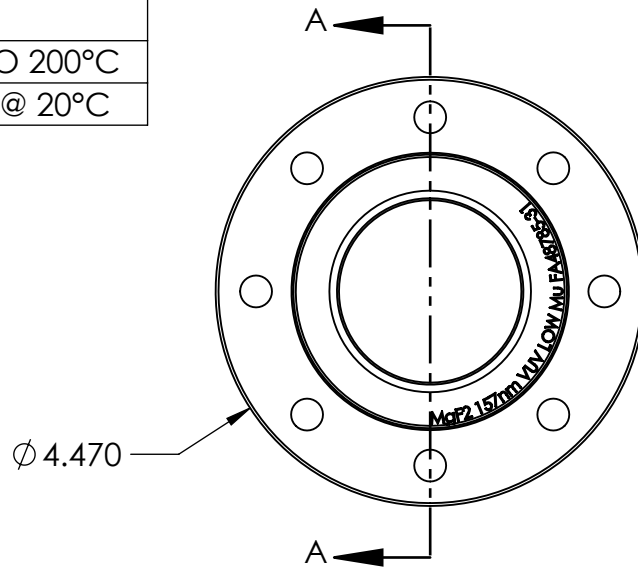


PERFORMANCE SPECIFICATIONS	
SURFACE QUALITY	40-20 OR BETTER
PARALLELISM	30 ARC MINUTES MAX
TRANSMITTED WAVEFRONT DISTORTION (TWD) (FLATNESS)	$< \lambda/4$ @ 633nm
TEMPERATURE	-100°C TO 200°C
PRESSURE	70 PSIG @ 20°C



PART No	WINDOW MATERIAL	FLANGE MATERIAL
FA48785	MAGNESIUM FLUORIDE UV GRADE	304 STN STL
FA48785-11	MAGNESIUM FLUORIDE 157nm VUV	304 STN STL
FA48785-21	MAGNESIUM FLUORIDE UV GRADE	316 STN STL
FA48785-31	MAGNESIUM FLUORIDE 157nm VUV	316 STN STL

PROPRIETARY AND CONFIDENTIAL THE INFORMATION CONTAINED IN THIS DRAWING IS THE SOLE PROPERTY OF SOLID SEALING TECHNOLOGY. ANY REPRODUCTION IN PART OR AS A WHOLE WITHOUT THE WRITTEN PERMISSION OF SOLID SEALING TECHNOLOGY IS PROHIBITED.				THIRD ANGLE PROJECTION 		TITLE MgF2 VIEWPORT IN 4.50 CF FLANGE			
REV.	APP'D	DATE	SCALE 1:2	DIMENSIONS IN INCHES [mm]	DRAWN	MH	10/13/2023	PART NO. FA48785 REV. A WWW.SOLIDSEALING.COM	
A1	MH	1/3/2024	VPWD0049-01		ENG APPR.	MH	1/3/2024		

DIMENSIONS ARE FOR REFERENCE ONLY. UNLESS NOTED, NO TOLERANCES ARE IMPLIED. CONSULT SST TO DISCUSS YOUR SPECIFIC REQUIREMENTS.