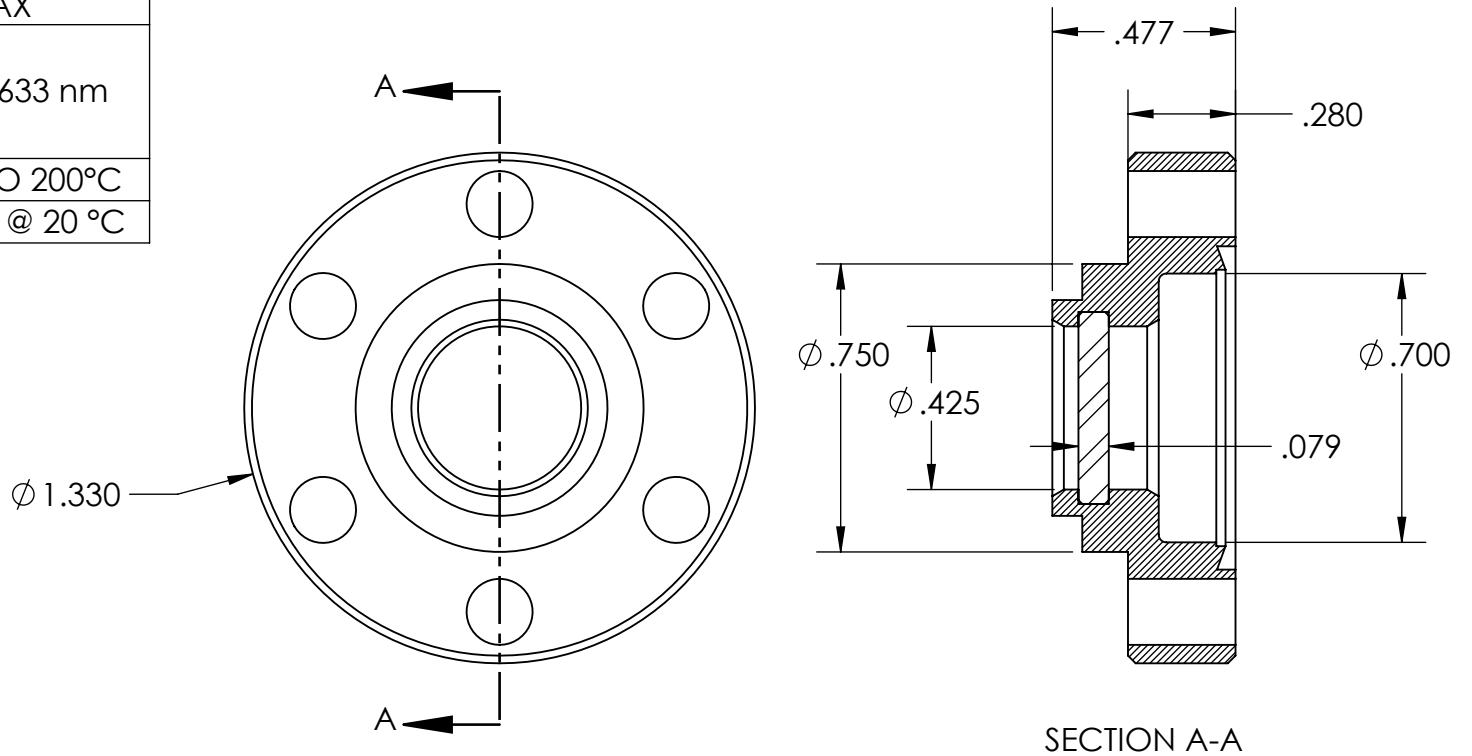


PERFORMANCE SPECIFICATIONS	
SURFACE QUALITY	40-20 OR BETTER
PARALLELISM	30 ARC MINUTES MAX
TRANSMITTED WAVEFRONT DISTORTION (TWD) (FLATNESS)	$< \lambda/4$ @ 633 nm
TEMPERATURE	-100°C TO 200°C
PRESSURE	165 PSIG @ 20 °C



PART No	WINDOW MATERIAL	FLANGE MATERIAL
FA48780	CALCIUM FLUORIDE UV GRADE	304 STN STL
FA48780-11	CALCIUM FLUORIDE 157nm VUV	304 STN STL
FA48780-21	CALCIUM FLUORIDE UV GRADE	316 STN STL
FA48780-31	CALCIUM FLUORIDE 157nm VUV	316 STN STL

PROPRIETARY AND CONFIDENTIAL THE INFORMATION CONTAINED IN THIS DRAWING IS THE SOLE PROPERTY OF SOLID SEALING TECHNOLOGY. ANY REPRODUCTION IN PART OR AS A WHOLE WITHOUT THE WRITTEN PERMISSION OF SOLID SEALING TECHNOLOGY IS PROHIBITED.				THIRD ANGLE PROJECTION 		TITLE <b>CaF2 VIEWPORT IN 1.33 FLANGE</b>			
REV.	APP'D	DATE	SCALE 2:1	DIMENSIONS IN INCHES [mm]	DRAWN	MH	10/12/2023	PART NO. FA48780 REV. A WWW.SOLIDSEALING.COM	
A1	MH	1/3/2024	VPWD0044-00		ENG APPR.	MH	1/3/2024		

**DIMENSIONS ARE FOR REFERENCE ONLY. UNLESS NOTED, NO TOLERANCES ARE IMPLIED. CONSULT SST TO DISCUSS YOUR SPECIFIC REQUIREMENTS.**