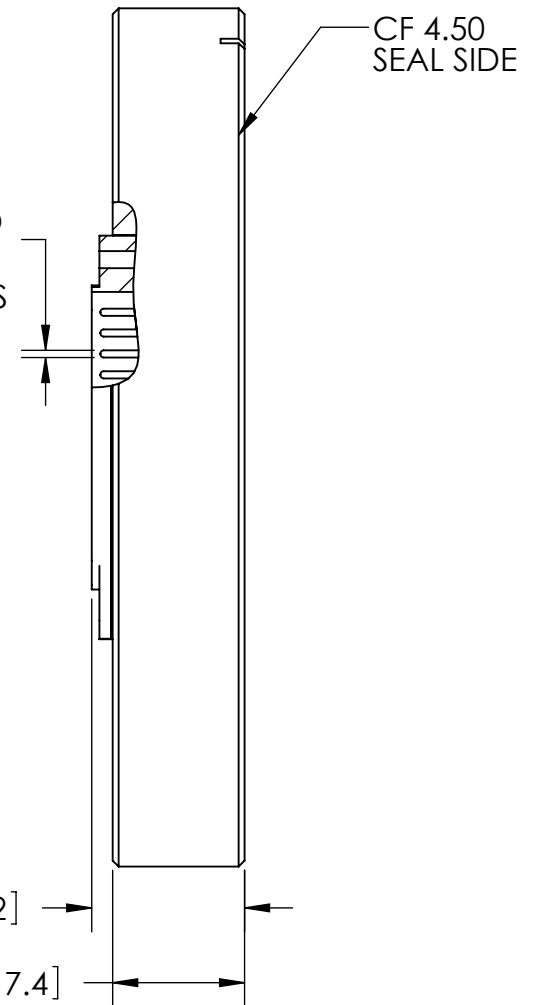


Ø.04 [1.0]
GOLD PLATED
STN STL
CONDUCTORS



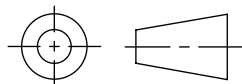
PLUGS SOLD SEPARATELY:
-VACUUM SIDE PEEK PLUG FA13605
-AIR SIDE PLUG KT14878

RATINGS	
VOLTAGE:	500V DC
CURRENT:	3 AMPS
PRESSURE:	1200 PSIG @ 20°C
TEMPERATURE:	-269°C TO 450°C

PROPRIETARY AND CONFIDENTIAL

THE INFORMATION CONTAINED IN THIS DRAWING IS THE SOLE PROPERTY OF SOLID SEALING TECHNOLOGY. ANY REPRODUCTION IN PART OR AS A WHOLE WITHOUT THE WRITTEN PERMISSION OF SOLID SEALING TECHNOLOGY IS PROHIBITED.

THIRD ANGLE PROJECTION



TITLE:

25 PIN SUB D CONNECTOR

WWW.SOLIDSEALING.COM



SOLID SEALING TECHNOLOGY, INC.

REV.	APP'D	DATE	SCALE 1:1	DIMENSIONS IN INCHES [mm]	DRAWN	JM	2/22/2006
A3	JS	11/21/2012	MPCL0094-01		ENG APPR.	MH	08/25/2006

PART NO. FA13287 REV. A

SALES DWG NO. FA13287SL REV. A3

DIMENSIONS ARE FOR REFERENCE ONLY. UNLESS NOTED, NO TOLERANCES ARE IMPLIED. CONSULT SST TO DISCUSS YOUR SPECIFIC REQUIREMENTS.